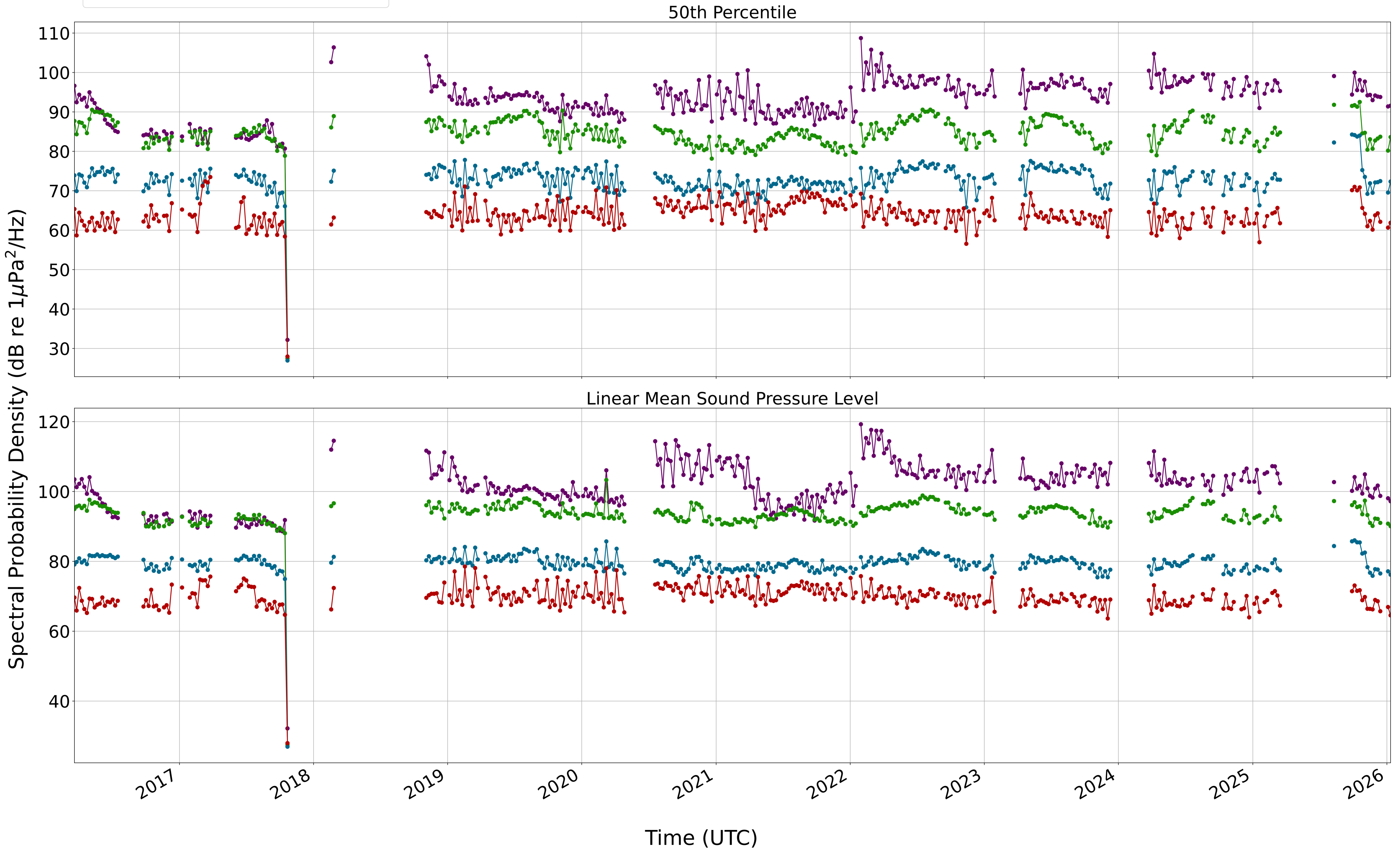


OCEAN NETWORKS CANADA

- 15-95 Hz (9 bins)
- 105-995 Hz (90 bins)
- 1005-9995 Hz (900 bins)
- 10005-25595 Hz (1560 bins)

50th Percentile, Linear Mean Sound Pressure Level
Campbell River Underwater Network • 50.020757° N • -125.23537° W • 8.248571 m
Soundscape Metrics Band Plot • Weekly SPD



One data point represents one week's worth of data. Average value across each frequency band is used.